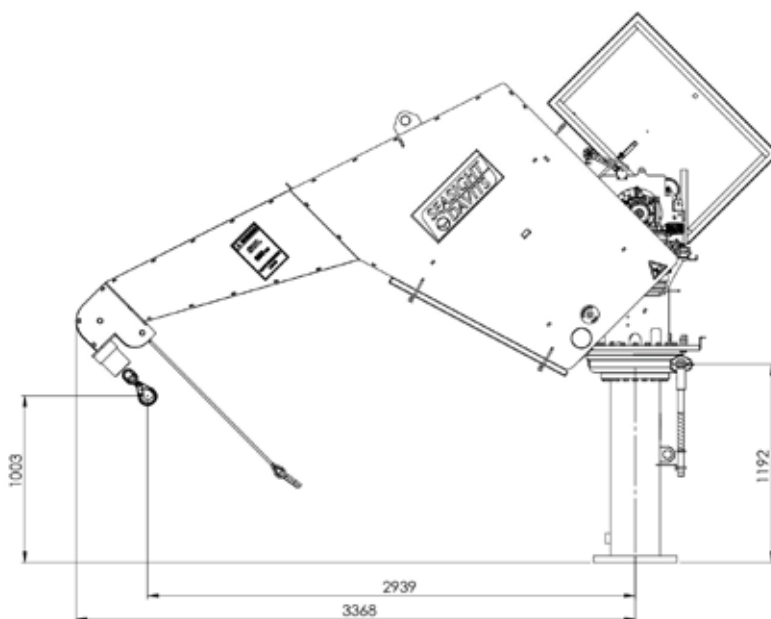
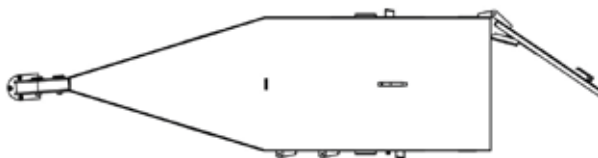
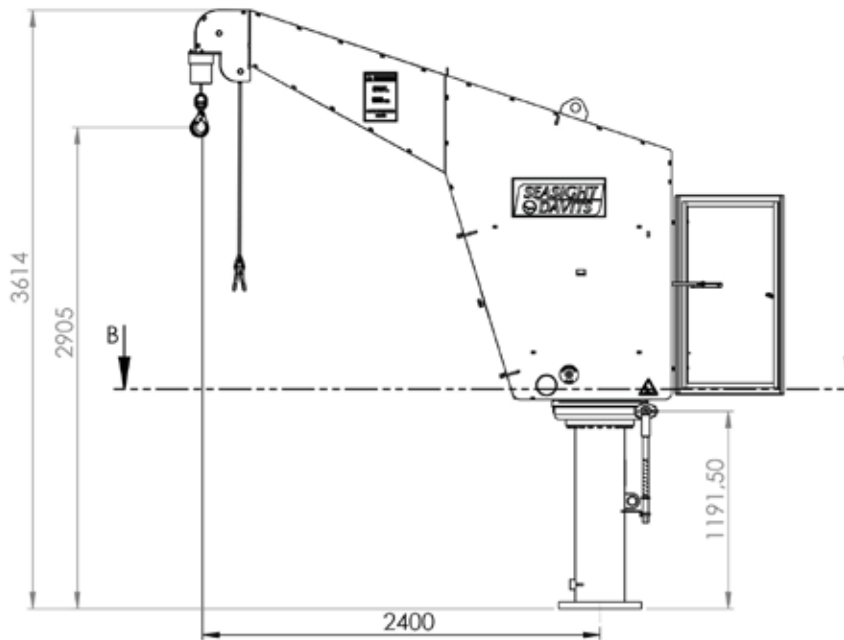


# Model BM2,4-10

## Plug and Play





# Technical Range

Design life	25 years
OSWL range	Up to 1000 kg
Outreach range	2,4 meters
Hoisting travel	26 meters
Hoisting speed	10 m/min. at Speed 1, up to 40 m/min. at Speed 2
Adjustable slewing angle	355° ltd
Slewing speed	Manual slewing
Slack rope protection	Included
Total weight	Approx. 1250 kg
<b>Electrical system</b>	
Power supply	3x690VAC/50 Hz or 3x400VAC/50 Hz
Power consumption	Approx. 6 kW
Protection	3x13 A. circuit breaker in starter cabinet.
<b>Working conditions</b>	
Wind speed	15m/sec
Sea state	1000 kg. at up to 2 m. significant wave height.
Temperature	-10/+40° C
<b>General Operation</b>	Plug and Play solution with integrated starter cabinet and remote control ready for use.
<b>Safety systems</b>	AOPS, HOPS and MOPS
<b>Surface Treatment</b>	Hot galvanized according to Corrosion Class C5M according to ISO:12944-5. Interior of crane house is treated with extra anti condensation/corrosion treatment.
<b>Approvals</b>	CE marked and according to Machinery Directive Class, or other approvals on request.
<b>Other features</b>	
Down bendable jib	The down bendable jib gives easier access to the lifting point and key components from deck level.



Beddingsvej 2  
DK-6960 Hvide Sande  
Denmark

Phone: +45 3173 0073  
E-mail: [info@seasight-davits.com](mailto:info@seasight-davits.com)  
Web: [seasight-davits.com](http://seasight-davits.com)  
CVR: DK33879253