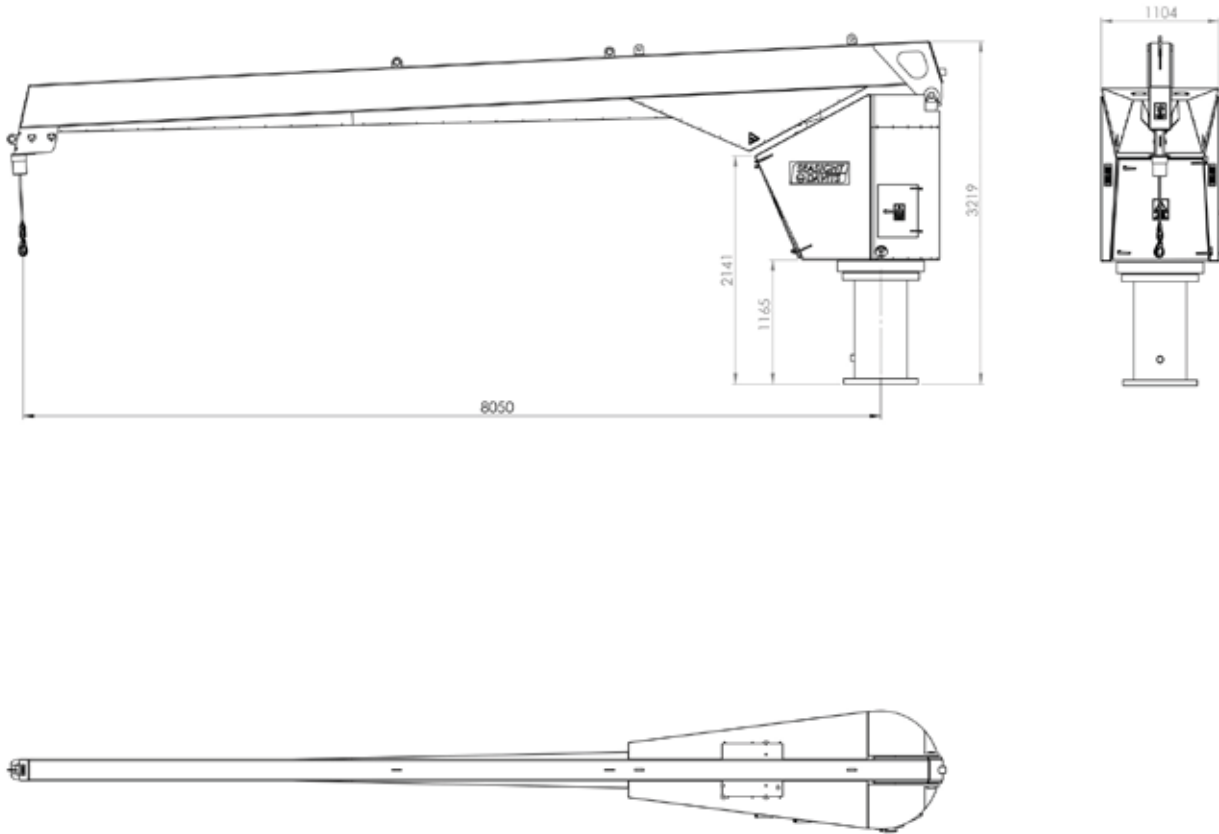


Model BMEL

Plug and Play



Outreach range 2,0 – 10 meters



Technical Range

Design life	25+ years
OSWL range	1000 – 2000 kg
Outreach range	2,0 – 10 meters
Hoisting travel	25 – 35 meters
Hoisting speed	10 m/min. at Speed 1, up to 40 m/min. at Speed 2
Adjustable slewing angle	355° ltd
Slewing speed	Electrical slewing with 0,5 – 2 rpm. Adjustable.
Luffing speed	1 stroke per 70 sec. (2 speed solution possible)
Slack rope protection	Included
Total weight	Approx. 4000-4400 kg. depending on model
Electrical system	
Power supply	3x400VAC/50 Hz 3x690VAC/50 Hz possible via transformer
Protection	3x32 A. circuit breaker in starter cabinet.
Power consumption hoisting	Approx. 6 kW at 1000 kg. Otherwise depending on lifting capacity.
Power consumption slewing	Approx. 2,2kW electrical motor with still stand heating drives a planetary gearbox with E-brake motor.
Hydraulic luffing	
Luffing	Approx. 7,5 KW hydraulic power pack with still stand heating.
Note	Electrical luffing possible
Working conditions	
Wind speed	15m/sec
Sea state	1000 kg. at up to 2 m. significant wave height.
Temperature	-10/+40° C
General Operation	Plug and Play solution with integrated starter cabinet and remote control ready for use.
Safety systems	AOPS, HOPS and MOPS
Surface Treatment	Hot galvanized according to Corrosion Class C5M according to ISO:12944-5. Interior of crane house is treated with extra anti condensation/corrosion treatment.
Approvals	CE marked and according to Machinery Directive Class, or other approvals on request.
Options	
External lifting arrangement	The lifting arrangement, EX-BM001-30, can be mounted onto the crane, making it possible to lift 3000 kg at 1 m. significant wave height.



Beddingsvej 2
DK-6960 Hvide Sande
Denmark

Phone: +45 3173 0073
E-mail: info@seasight-davits.com
Web: seasight-davits.com
CVR: DK33879253